

PCAR Products



F1 Key Fob

All New Design for Ferrari 355,360,456,550 and 575

User's Guide

Designed and Engineered by PCAR Products

Your *F1* fob is a modern redesign of the OEM Ferrari fob using state-of-the-art technology that offers improved reliability while retaining the familiar look, feel and functionality of the original. The alkaline battery and problematic terminals of the original design have been replaced with a durable lithium coin cell featuring a 10-yr shelf life and capacity for over 30,000 operations.

The *F1* is guaranteed to be fully compatible with the Ferrari 355,360,456,550 and 575 OEM fobs.



Take a moment to open the fob and jot down the serial number located on the back of the circuit board. If your *F1* is ever lost or damaged, you can use this number to order a replacement that will work without requiring re-programming.

USING YOUR *F1*

Before use, you will need to program it to your immobilizer. To do this, you will need the car's 4-digit PIN code and follow the procedure in your Owner's Manual. After programming, your *F1* will work just like your OEM key fob: one press to lock, one press to unlock.



If you don't know your vehicle's PIN code or don't want to deal with programming, try our "Self-Programming" *F2* fob.

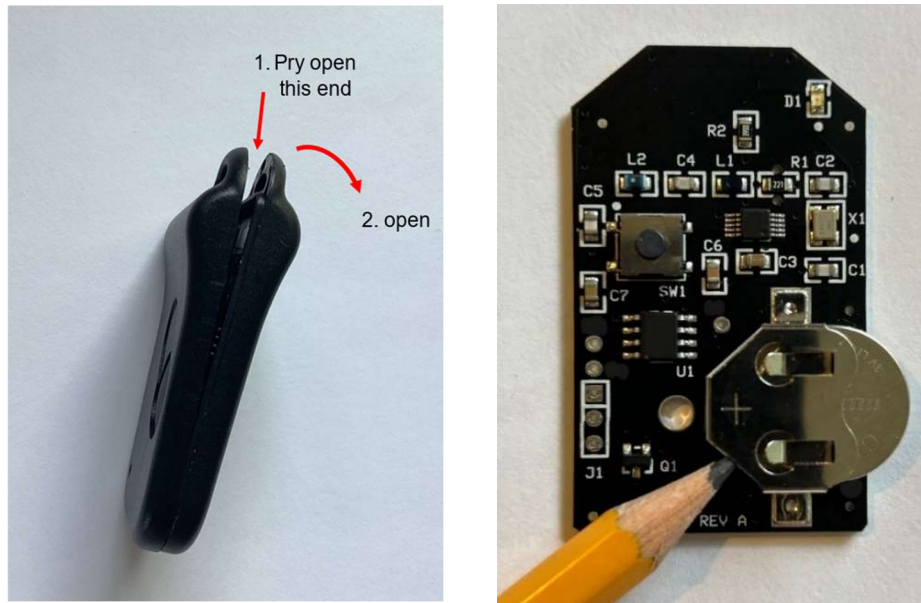
The *F1* comes in a housing identical to the OEM housing:



BATTERY SERVICING

The F1 uses a standard CR1632 lithium coin cell. The one provided has a 10-year shelf- life and a capacity for over 30,000 operations. When replacing, use only high-quality batteries from reputable sources such as Panasonic, Toshiba, Murata, or Energizer, as quality of lesser-known brands can vary significantly.

To replace the battery, remove the small Phillips screw on the back of the case, and carefully pry it open at the key ring end as illustrated.



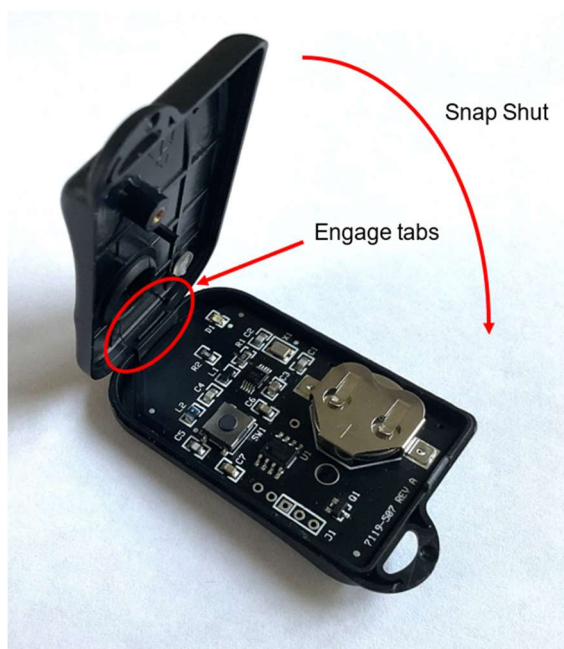
Remove the board from the case and push the old battery out from the side. Avoid contacting electrical components. (This is a good time to inspect the battery contacts and clean if necessary). Install the new battery + side UP.



CAUTION

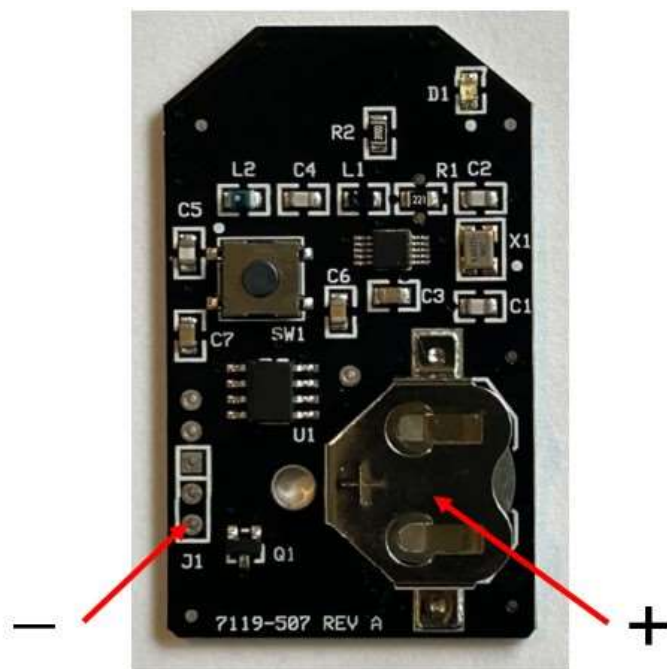
Installing the battery upside down will short it out and reduce its capacity. While the battery may still function, we recommend replacing any battery that has been installed backwards to ensure maximum longevity.

Before closing the case, press the button and make sure the LED illuminates. If OK, close the case by engaging the tabs as shown, then rotate the cover down, snap it shut and re-install the screw.



If the LED doesn't illuminate, double-check that the battery is installed "+" side up and make sure the voltage is above the required minimum of 1.8v. Use a digital voltmeter to probe the fob as shown below.

Due to the unique discharge characteristics of lithium coin cells, it is imperative that you measure voltage with the button pressed.



FOB Range

People often ask, "How far away will my *F1* work?" It's a tough question because range depends on a number of other factors – primarily the immobilizer radio receiver, but also the surrounding environment, how the fob is held, orientation relative to the vehicle, condition of the battery, etc.

A more meaningful question is, "How does the *F1* range compare to my current fob?" Feedback from users show that in side-by-side comparisons, the *F1* generally operates at a greater distance than OEM fobs and up to four times the distance of competing aftermarket fobs.

Questions? Drop us a line at: support@EZIMMOBLOCK.com, or call: 860-271-1826